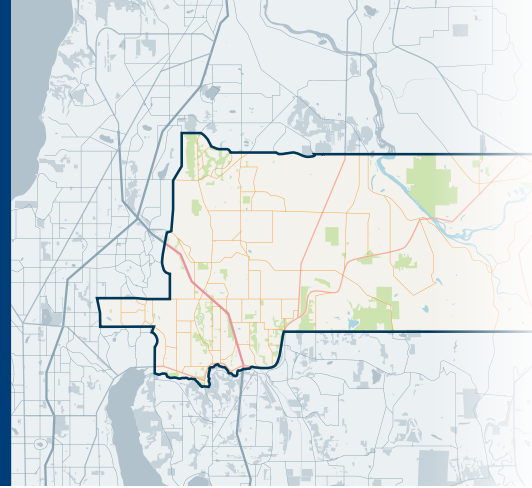




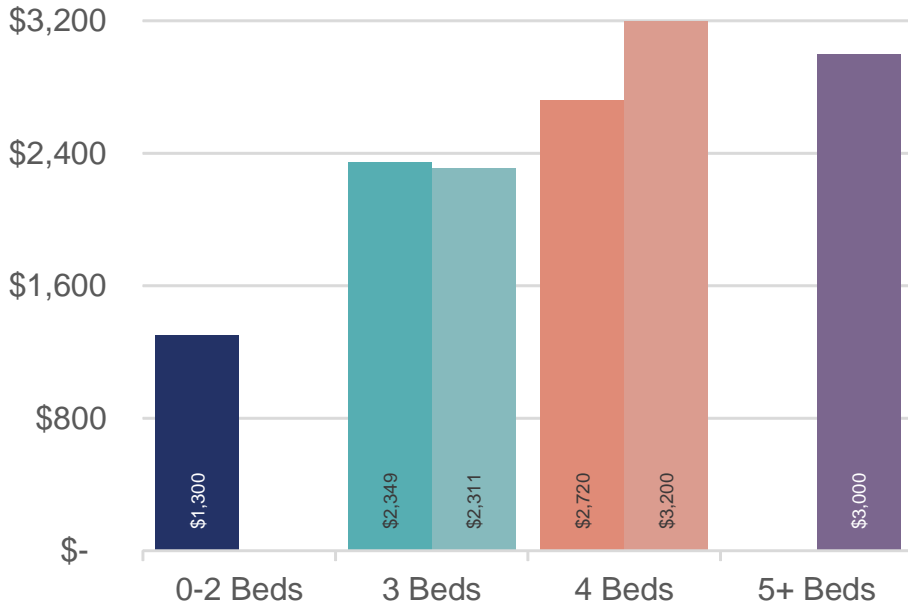
610

Southeast Snohomish

NORTH OF SEATTLE



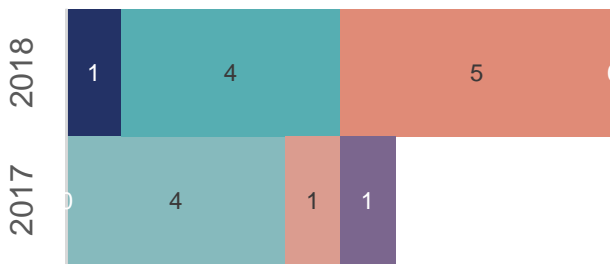
JANUARY 2018 | NWMLS Monthly Rental Data



Average Rental Price

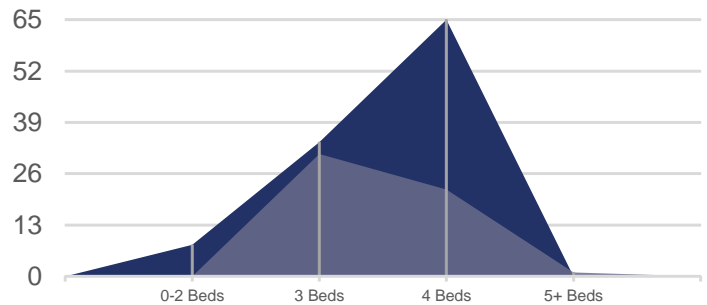
Bedrooms	Jan 2018	Jan 2017	Change
0-2	\$1,300	\$-	n/a
3	\$2,349	\$2,311	2%
4	\$2,720	\$3,200	-15%
5+	\$-	\$3,000	n/a

Number of Units Rented



	0-2 Beds	3 Beds	4 Beds	5+ Beds
Jan 2018	1	4	5	0
Jan 2017	0	4	1	1

Average Number of Days on Market



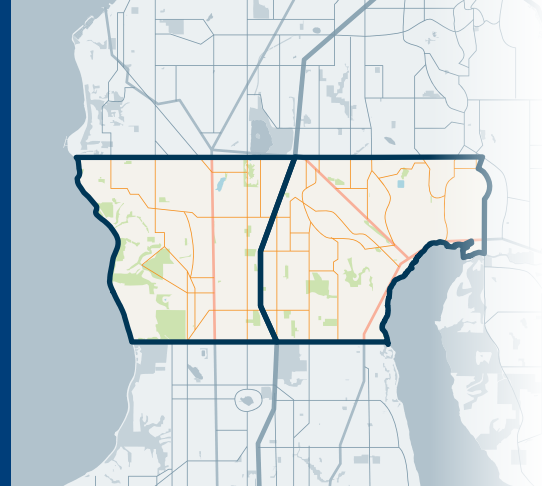
	0-2 Beds	3 Beds	4 Beds	5+ Beds
Jan 2018	8	34	65	0
Jan 2017	0	31	22	1



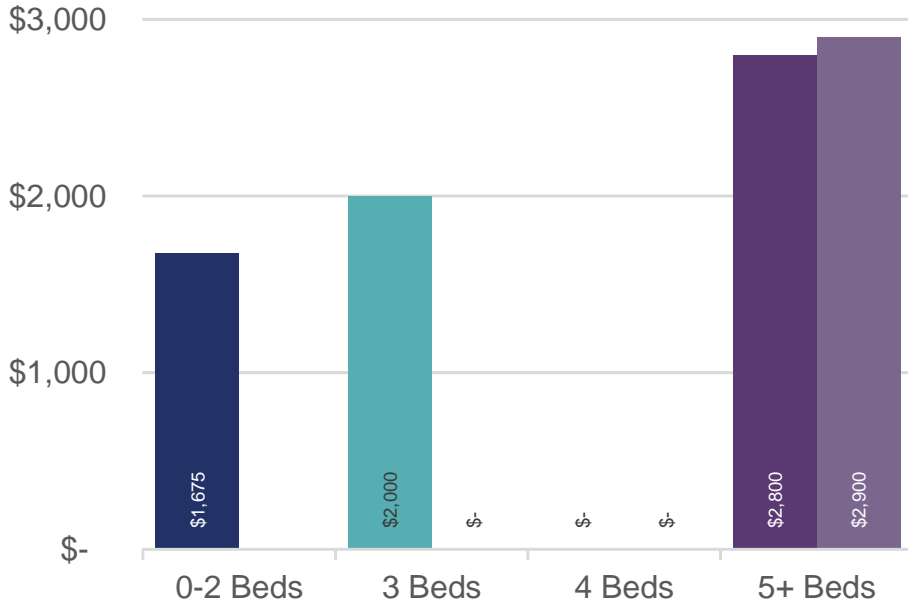
715&720

Richmond Beach/Shoreline, LF Park

NORTH OF SEATTLE



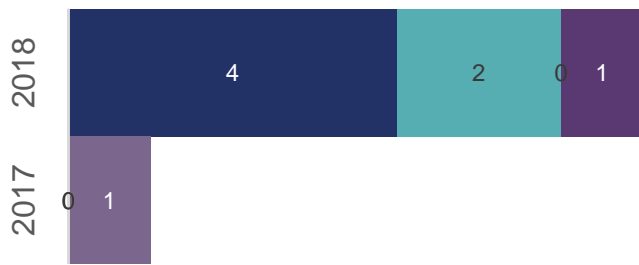
JANUARY 2018 | NWMLS Monthly Rental Data



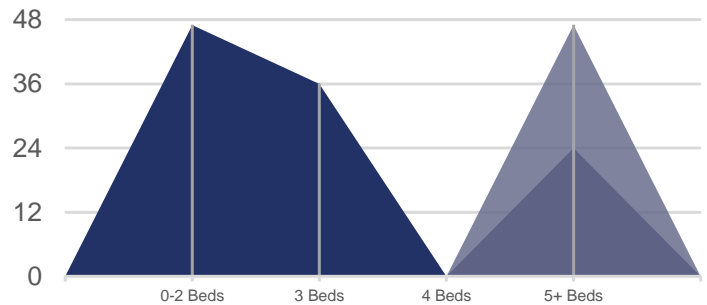
Average Rental Price

Bedrooms	Jan 2018	Jan 2017	Change
0-2	\$1,675	\$-	n/a
3	\$2,000	\$-	n/a
4	\$-	\$-	n/a
5+	\$2,800	\$2,900	-3%

Number of Units Rented



Average Number of Days on Market



	0-2 Beds	3 Beds	4 Beds	5+ Beds
Jan 2018	4	2	0	1
Jan 2017	0	0	0	1

	0-2 Beds	3 Beds	4 Beds	5+ Beds
Jan 2018	47	36	0	24
Jan 2017	0	0	0	47