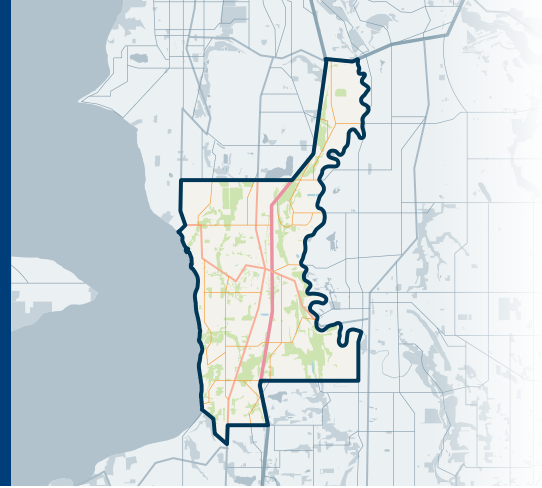




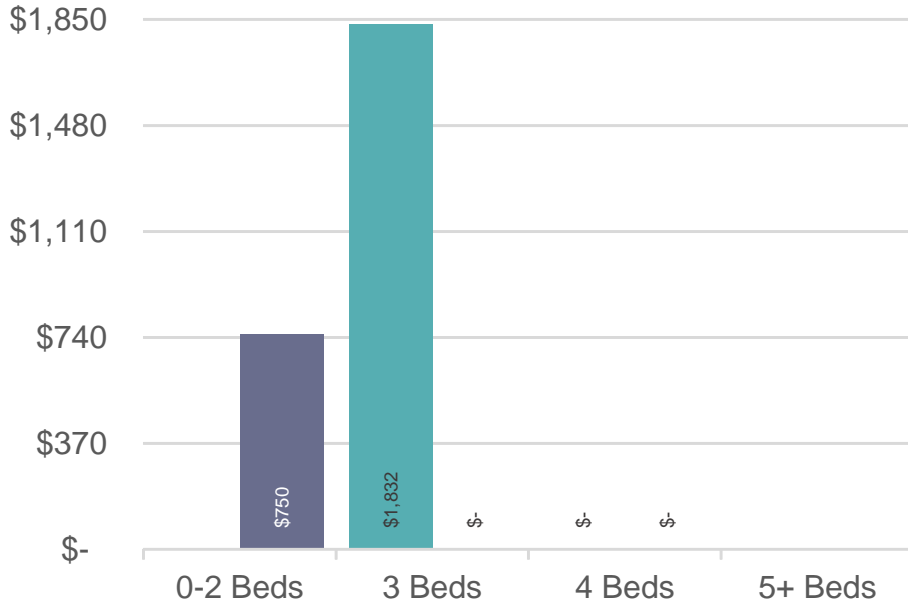
# 120

Des Moines/Redondo

# SOUTH OF SEATTLE



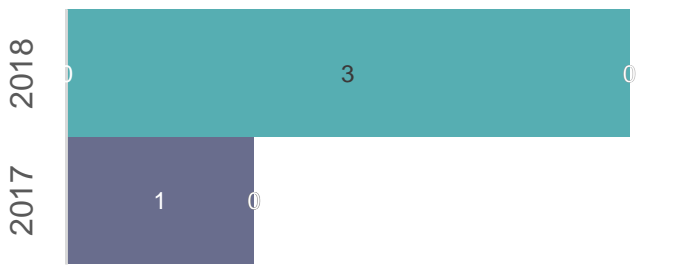
JANUARY 2018 | NWMLS Monthly Rental Data



Average Rental Price

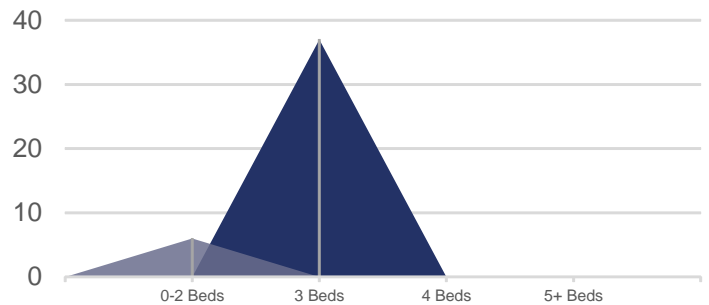
Bedrooms	Jan 2018	Jan 2017	Change
0-2	\$-	\$750	n/a
3	\$1,832	\$-	n/a
4	\$-	\$-	n/a
5+	\$-	\$-	n/a

Number of Units Rented



	0-2 Beds	3 Beds	4 Beds	5+ Beds
Jan 2018	0	3	0	0
Jan 2017	1	0	0	0

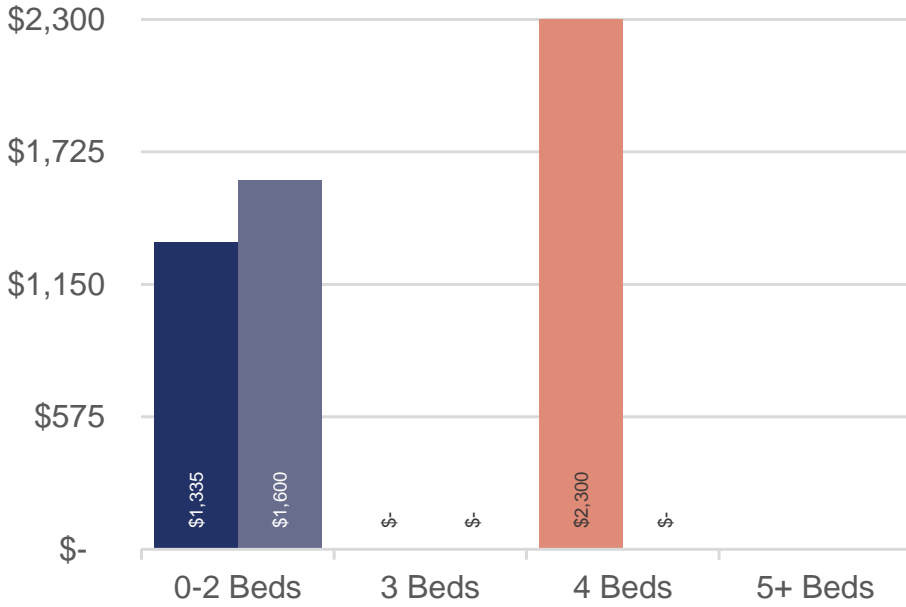
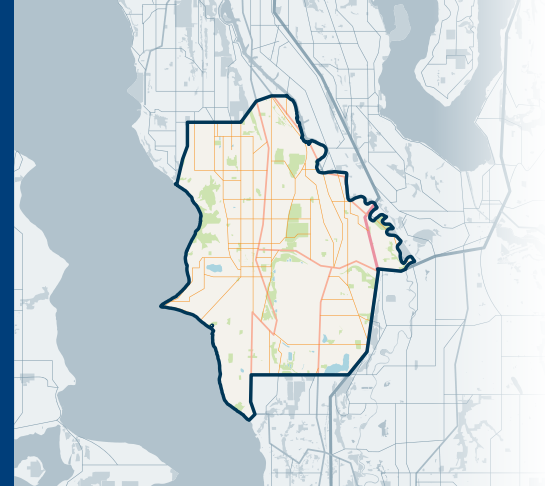
Average Number of Days on Market



	0-2 Beds	3 Beds	4 Beds	5+ Beds
Jan 2018	0	37	0	0
Jan 2017	6	0	0	0

# SOUTH OF SEATTLE

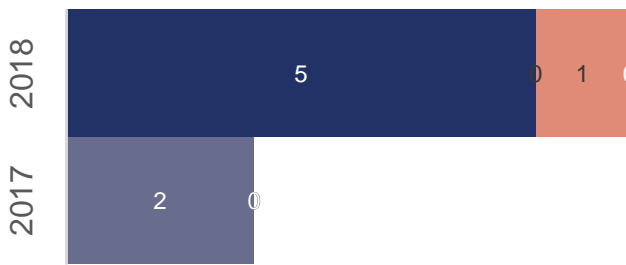
JANUARY 2018 | NWMLS Monthly Rental Data



Average Rental Price

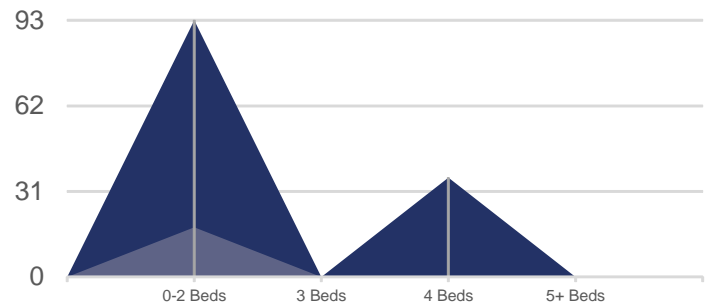
Bedrooms	Jan 2018	Jan 2017	Change
0-2	\$1,335	\$1,600	-17%
3	\$-	\$-	n/a
4	\$2,300	\$-	n/a
5+	\$-	\$-	n/a

Number of Units Rented



	0-2 Beds	3 Beds	4 Beds	5+ Beds
Jan 2018	5	0	1	0
Jan 2017	2	0	0	0

Average Number of Days on Market



	0-2 Beds	3 Beds	4 Beds	5+ Beds
Jan 2018	93	0	36	0
Jan 2017	18	0	0	0