

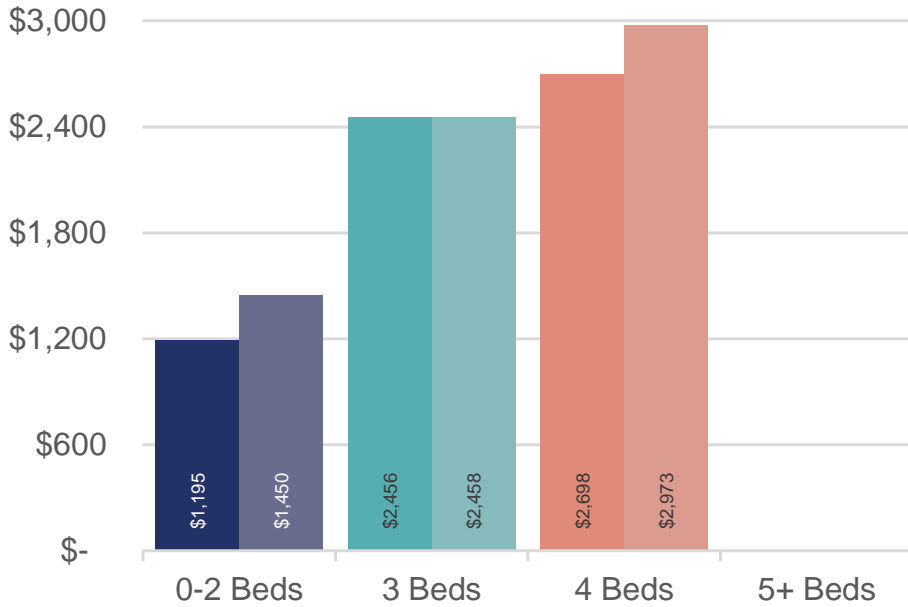
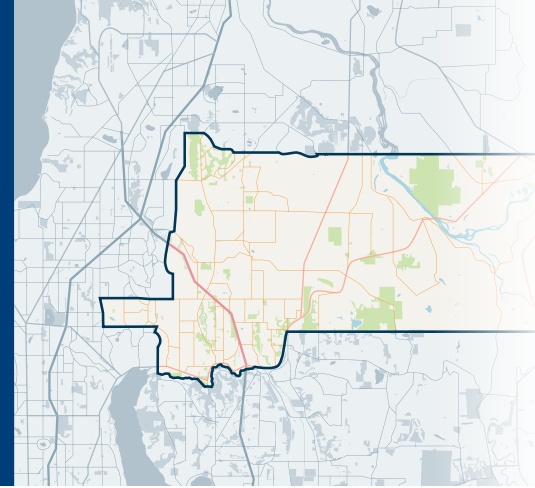


# 610

## Southeast Snohomish

# NORTH OF SEATTLE

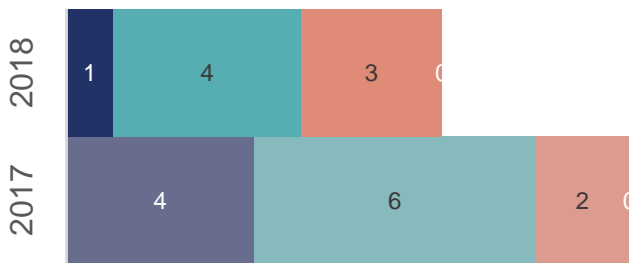
SEPTEMBER 2018 | NWMLS Monthly Rental Data



Average Rental Price

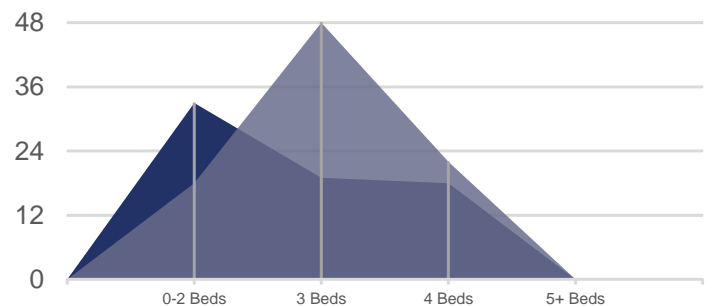
Bedrooms	Sep 2018	Sep 2017	Change
0-2	\$1,195	\$1,450	-18%
3	\$2,456	\$2,458	0%
4	\$2,698	\$2,973	-9%
5+	\$-	\$-	n/a

Number of Units Rented



	0-2 Beds	3 Beds	4 Beds	5+ Beds
Sep 2018	1	4	3	0
Sep 2017	4	6	2	0

Average Number of Days on Market



	0-2 Beds	3 Beds	4 Beds	5+ Beds
Sep 2018	33	19	18	0
Sep 2017	18	48	22	0



[JMWGroup@Windermere.com](mailto:JMWGroup@Windermere.com)

Seattle | Kirkland | [windermere-pm.com](http://windermere-pm.com) | 206.621.2037

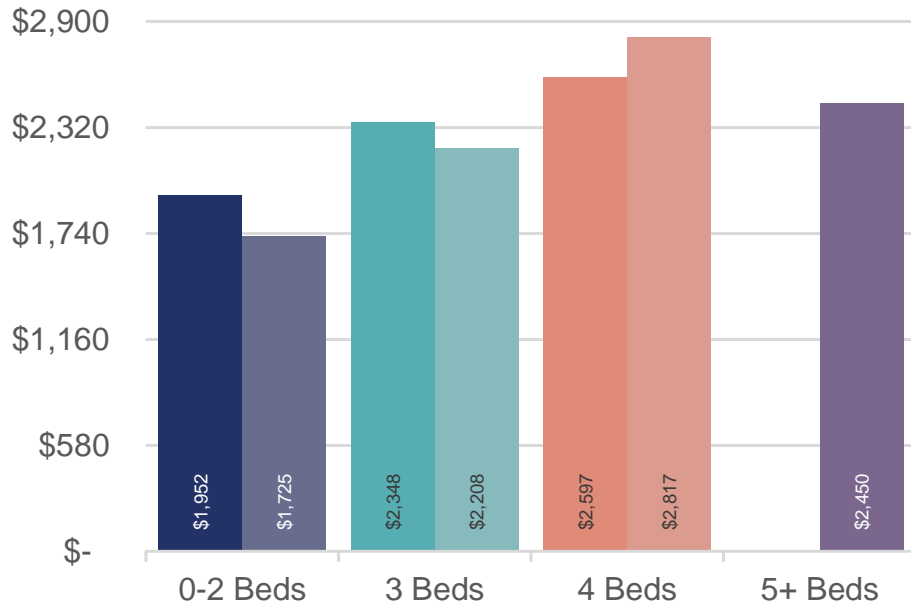
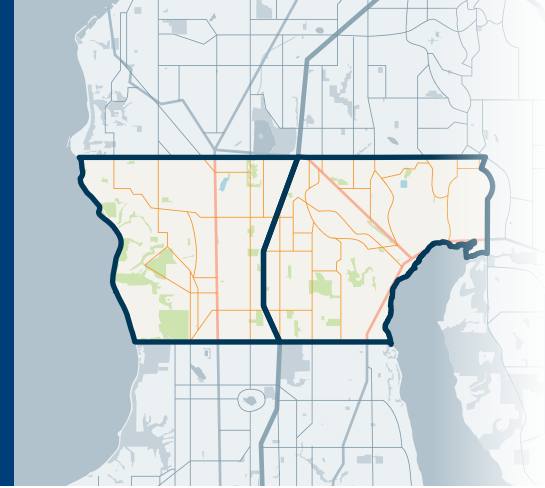


# 715&720

Richmond Beach/Shoreline, LF Park

# NORTH OF SEATTLE

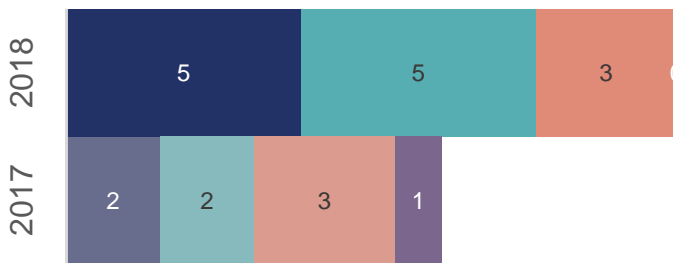
SEPTEMBER 2018 | NWMLS Monthly Rental Data



Average Rental Price

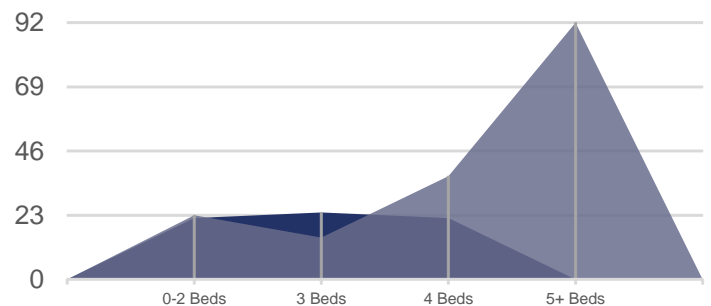
Bedrooms	Sep 2018	Sep 2017	Change
0-2	\$1,952	\$1,725	13%
3	\$2,348	\$2,208	6%
4	\$2,597	\$2,817	-8%
5+	\$-	\$2,450	n/a

Number of Units Rented



	0-2 Beds	3 Beds	4 Beds	5+ Beds
Sep 2018	5	5	3	0
Sep 2017	2	2	3	1

Average Number of Days on Market



	0-2 Beds	3 Beds	4 Beds	5+ Beds
Sep 2018	22	24	22	0
Sep 2017	23	15	37	92



[JMWSGroup@Windermere.com](mailto:JMWSGroup@Windermere.com)

Seattle | Kirkland | [windermere-pm.com](http://windermere-pm.com) | 206.621.2037